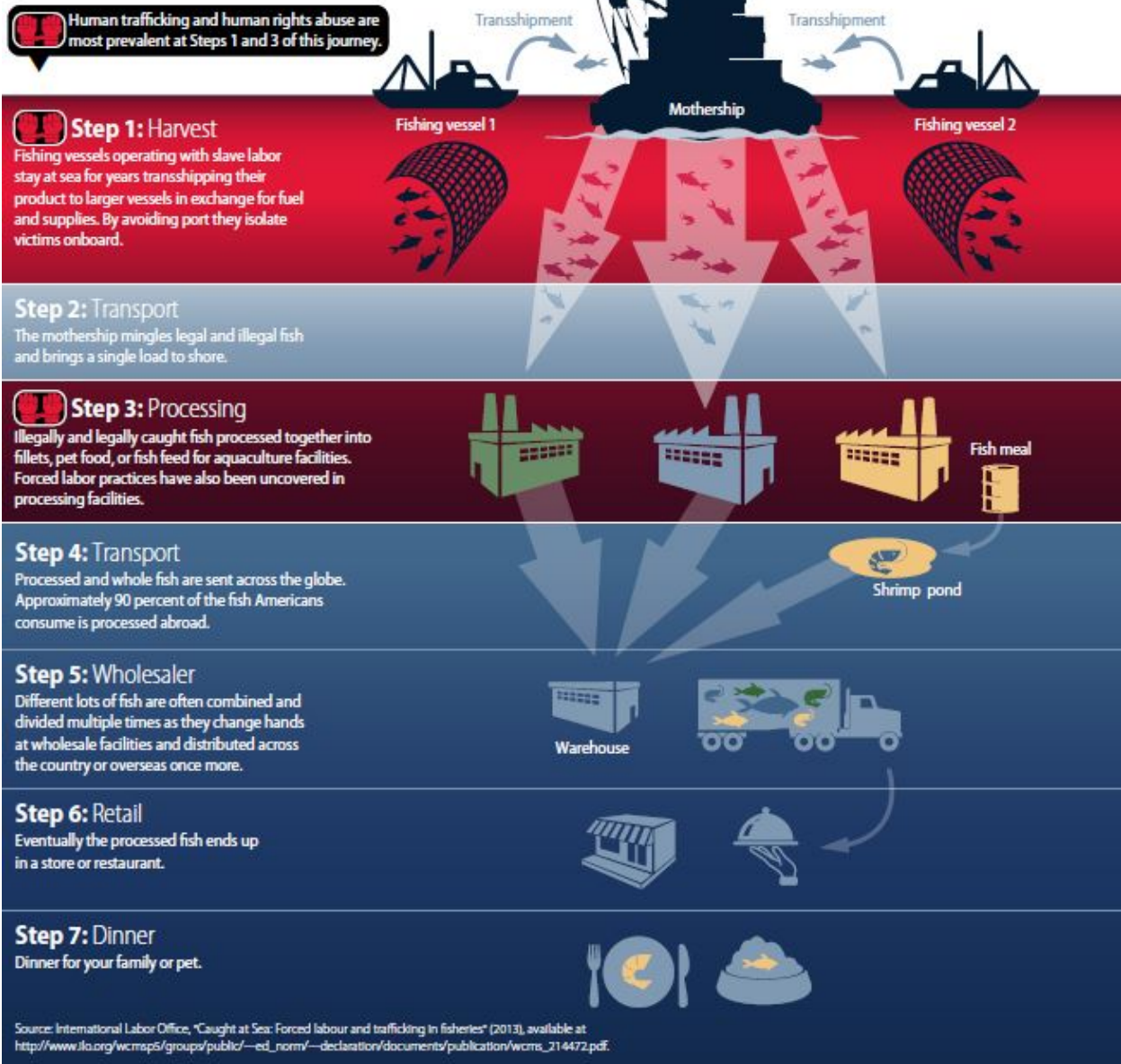


FIGURE 1

How slave labor feeds the seafood supply chain

Some fishing vessels operating in foreign waters employ slave labor to artificially reduce costs. A fish caught with slave labor enters the complex global supply chain, where it mingles with or is fed to legal seafood products and ends up on American plates.



Source: International Labor Office, "Caught at Sea: Forced labour and trafficking in fisheries" (2013), available at http://www.ilo.org/wcmsp5/groups/public/-ed_norm/-declaration/documents/publication/wcms_214472.pdf.